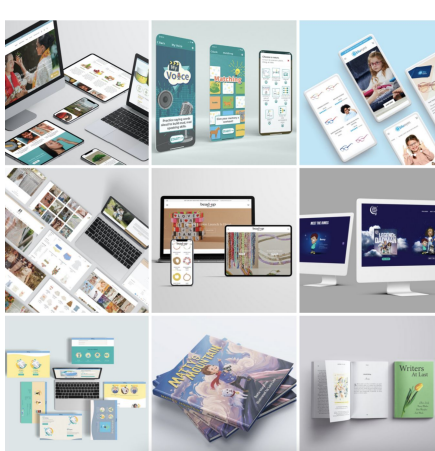


Department of Art and Art History

WELCOME TO ECSU!

Soojin Kim

Assistant Professor of
Digital Art & Media Design



MOCK CLASS PROJECT
**GIF ANIMATION
IN PHOTOSHOP**



SYMBOL DESIGN

In this project, students dive deeper into symbol design, and set out to create a set of symbols for a list of words given. The challenge is to maintain the consistency in style while clearly communicating the meaning of each word visually.

Student work from Spring 2017
Mike Zuraw



PROGRAMS OF STUDY

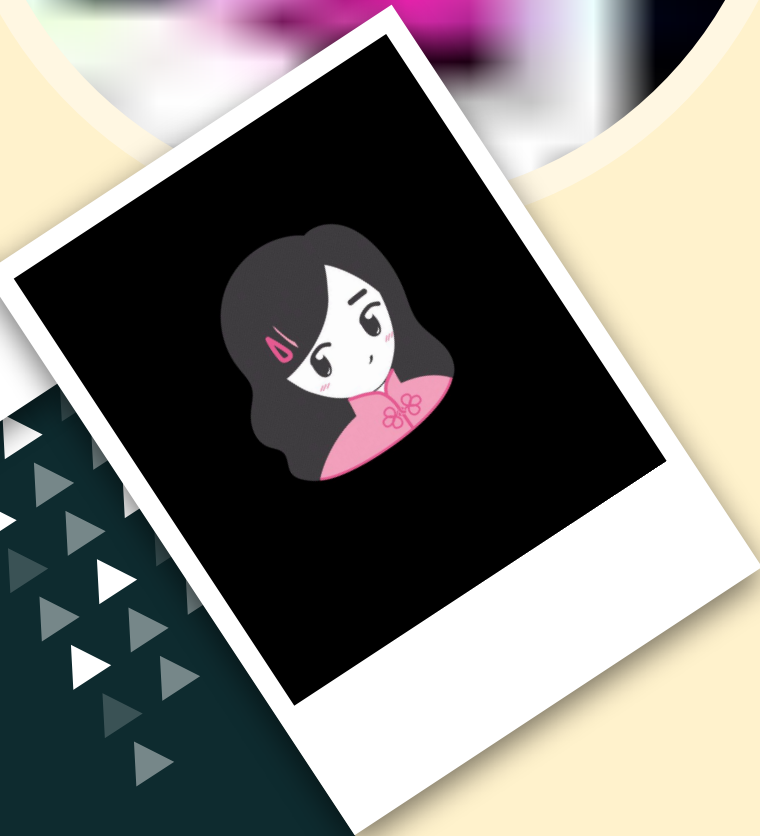
Majors

Art History
[Digital Art & Media Design](#)
Digital Media Design
Illustration
Studio Art

Minors

Art History Minor
Costume and Fashion Design Minor
Digital Art and Media Design Minor
Film Studies Minor
Game Design Minor
Studio Art Minor







resting
face



Amused



Previously there was the theory that the shell developed from scutes, hard bony plates that cover the skin of many reptiles, had fused together to form a bony structure that evolved into a part of the skeleton. Turns out it came from ribs all along - or at least it started with the ribs broadening, developing thoracic structures between the ribs, and it all coming together to form the gastron, the bottom part of the shell that covers the belly.

FINALLY WE'VE UNMASKED THEIR SECRET!



Discovered in the 1890s in South Africa, Eunotosaurus was a small lizard that dated back 260 MYA. It had broad overlapping ribs. Scientists at the time dismissed Eunotosaurus as a turtle relative because it did not have a shell like modern turtles. In 2015, Tyler Lyson and colleagues took another look at Eunotosaurus and



PAPPOCHELYS
260 MYA

Odontochelys was discovered in 2008 in China and dates back to about 220 MYA. Odontochelys has a plastron (Part of the shell that covers the stomach). The plastron was formed from the bottom section of the rib bones. Odontochelys was thought to spend a lot of time in the primordial oceans and developed the plastron to protect it from predators from below.



PROGANOCHELYS
220 MYA



PAPPOCHELYS
260 MYA

Discovered in 2015 in Germany, Pappochelys was a small reptile that dated back to 240 MYA. Like Eunotosaurus, it also had no shell, but it did have broad ribs and rib-like bony structures bridging the gaps between the skeletal ribs.

ODONTOCHELYS
220 MYA



Proganochelys was discovered in 1887, and found in Greenland, Germany, and Thailand and dates back to 240 MYA. Proganochelys had a fully formed shell and plastron. Unlike modern turtles, proganochelys had teeth, but overall resembled the turtles we know and



RED-EARED SLIDER
MODERN ERA

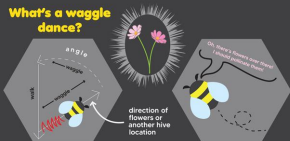
One example of many species of modern turtles. No teeth and a full shell. Truly an evolutionary hero in a

DEVELOPMENT OF THE PLASTRON

...lapping ribs (Fig. 1). Broad

Don't Wake Up the Bees!

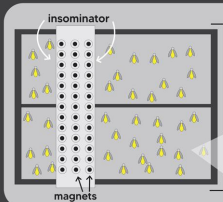
Or else they can't do their wobble dance...



Researchers attached magnetic steel and copper tags to 50 bees in two different hives; one hive contained a treatment group, the other contained a control group.



Magnetic steel
Treatment group
Copper
Control group



This device was used to wake the bees during the night. It's called the insomniator.

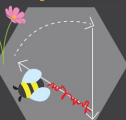


Overall Sleep



On the left, the graphs illustrate the sleep patterns of the bees before and after the magnetic disturbance. At one point in the control group, none of the bees were asleep, however the amount of bees receiving treatment fluctuated more. The same goes for how many bees were in a deep sleep in both groups. At some points, the bees experienced deep sleep in the control group then in the treatment group.

The morning after overnight disturbance



Obviously, this is wrong.

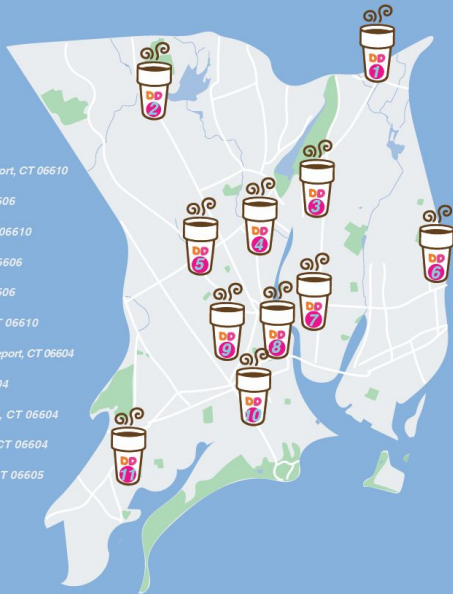
Sleep deprivation causes bees to lose their

DUNKIN' DONUTS

ALL OVER BRIDGEPORT, CONNECTICUT

LOCATIONS

- 1055 Huntington Turnpike, Bridgeport, CT 06610
- 4150 Main St, Bridgeport, CT 06606
- 285 Boston Ave, Bridgeport, CT 06610
- 529 North Ave, Bridgeport, CT 06606
- 2427 Main St, Bridgeport, CT 06606
- 2165 Boston Ave, Bridgeport, CT 06610
- 710 Water St Bridgeport Gbta, Bridgeport, CT 06604
- 979 Main St, Bridgeport, CT 06604
- 280 Washington Ave, Bridgeport, CT 06604
- 815 Lafayette Blvd, Bridgeport, CT 06604
- 2550 Fairfield Ave, Bridgeport, CT 06605



SEE YOU AGAIN!

THANK
YOU